



LIVE WATER
PROPERTIES

Grover 360

DRIGGS, IDAHO

360 Acres | \$2,500,000

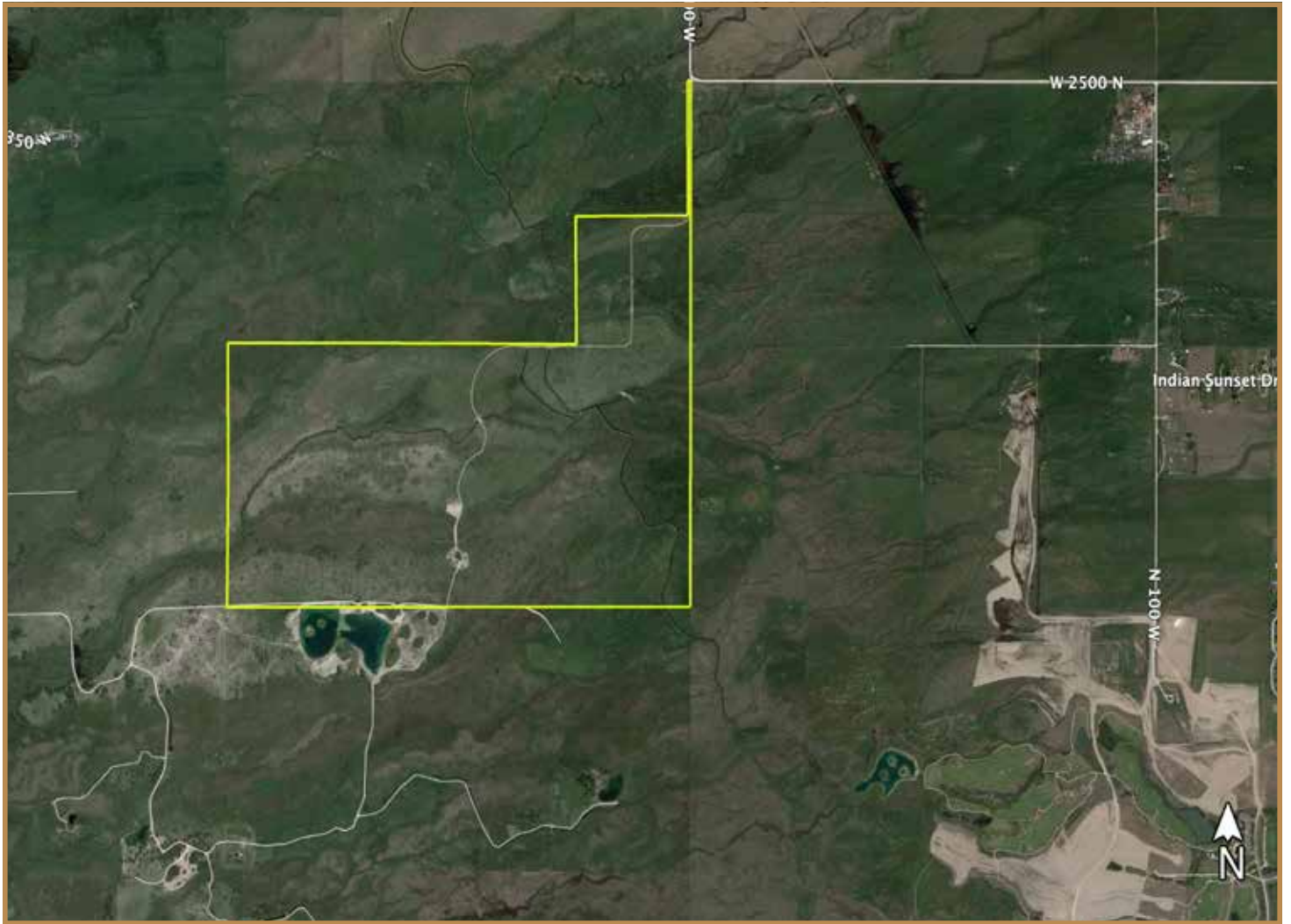
CONTACT:

Tate Jarry 307.413.2180

Tate@livewaterproperties.com

The Grover property consists of 360 acres in the heart of the view corridor, minutes from downtown Driggs, Idaho. Numerous spring sloughs, sub-irrigated pastures and natural terrain create a beautiful wetlands on a good portion of the property providing excellent onsite waterfowl hunting opportunities. With habitat enhancement and pond creation, this property could be an exceptional duck hunting property. Interior roads created by the owner provide easy access throughout the property. Grover 360 offers exceptional Teton and Big Hole Mountain views.





Grover 360- Aerial Map

Maps are for visual aid only ~ accuracy is not guaranteed.



Grover 360- Location Map

Maps are for visual aid only ~ accuracy is not guaranteed.



Grover 360- Terrain Map

Maps are for visual aid only ~ accuracy is not guaranteed.