



LIVE WATER
PROPERTIES


Henry's Fork Overlook

ASHTON, IDAHO
213 acres | \$4,450,000

CONTACT:

Tate Jarry
307.413.2180

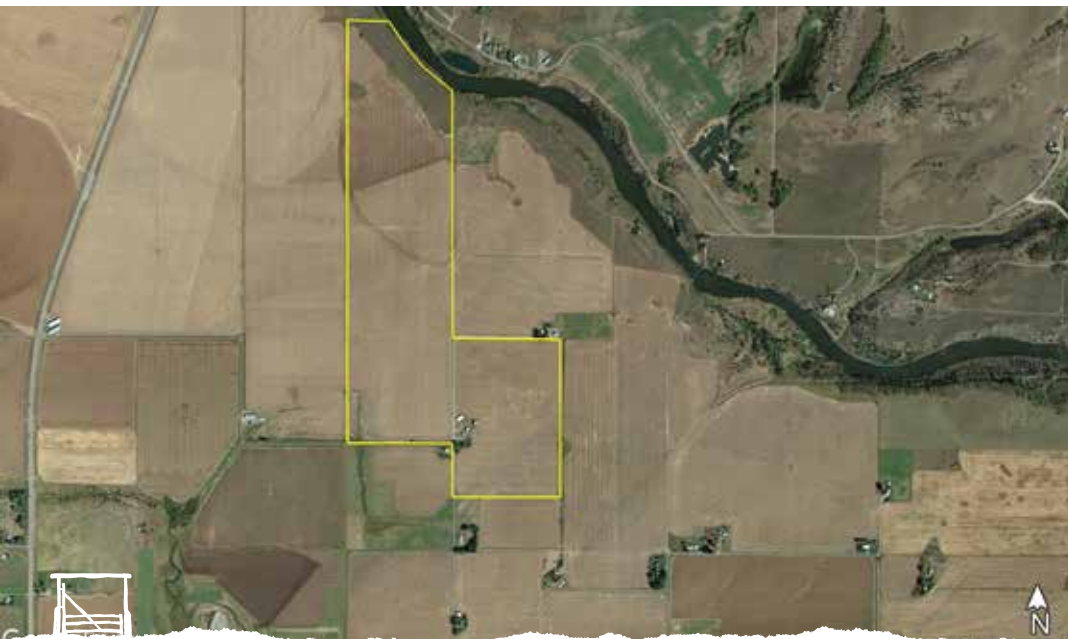
tate@livewaterproperties.com

Located near downtown Ashton, Idaho, this operational farm provides a quarter mile of frontage on the famed Henry's Fork River. Build a dream western retreat on the banks of this world class fishery with Grand Teton Views in the distance. Farm production on the ranch includes 193 tillable acres irrigated primarily by three half-washer center pivots. These pivots will transfer with the sale of the ranch. A current farm lease was signed in 2021 which extends through 2026 at a rate of \$160/irrigated acre or \$30,000 annually.

WWW.LIVEWATERPROPERTIES.COM

At a Glance

- ¼ mile frontage on the famed Henry's Fork River
- 213 deeded acres with 193 tillable
- \$30,000 annual farm lease through 2026
- 3 center pivots (half washers)
- 4,000 ft artesian well with 100 degree water temps used for geothermal heating for main home
- Elevated building sites overlooking Henry's Fork
- Main house and numerous outbuildings including a large dairy style barn and spud storage building



*** This is an exclusive listing of Live Water Properties LLC; an agent of Live Water Properties must be present to conduct a showing. The owners respectfully request that other agents and/or prospective buyers contact Live Water Properties in advance to schedule a proper showing and do not attempt to tour or trespass the property on their own. Thank you.*